

BLT STUDIOS

Stage 6



Stage 6
1005 Lillian Way
Hollywood, CA 90038

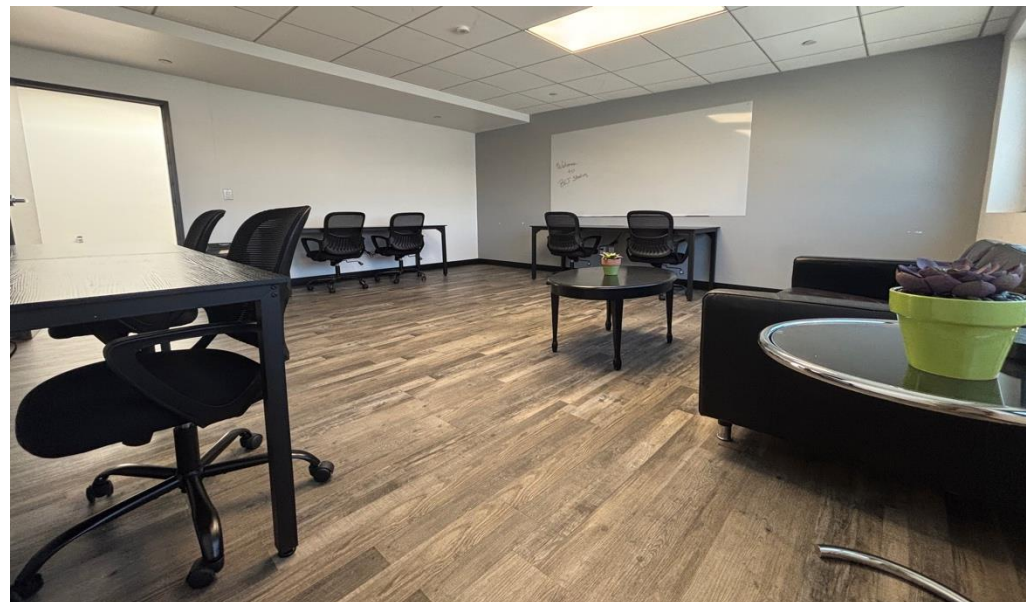
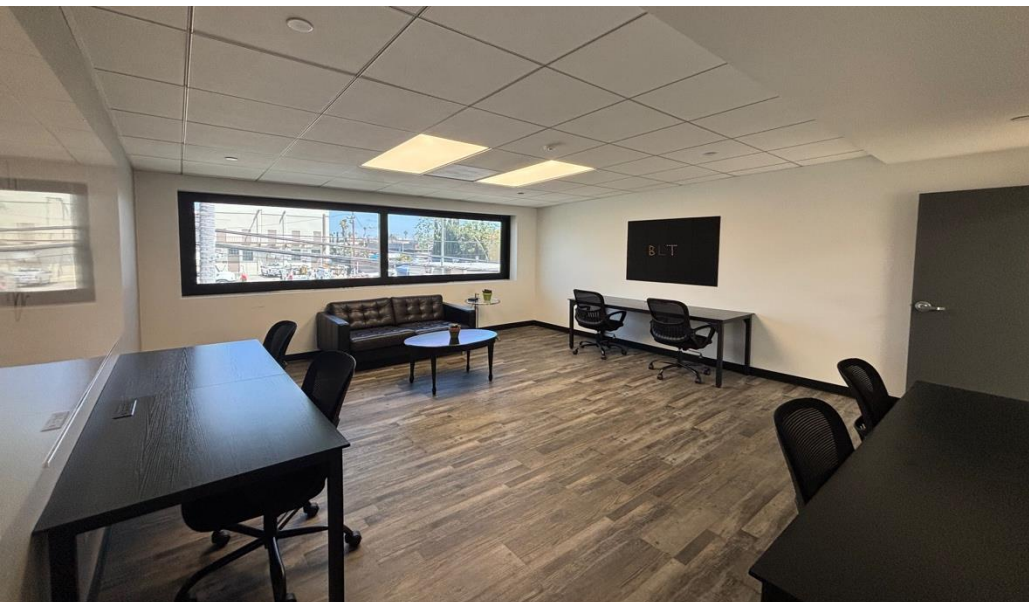
(323) 391-1991
bookings@bltsoundstages.com
bltsoundstages.com



Stage 6
1005 Lillian Way
Hollywood, CA 90038

Stage 6, Details
Total Square Footage: 9,845
Usable Square Footage: 9,086
104'7" x 90'2"
No cyc

18 to Grid
1200 amps
40 tons HVAC
Elephant Door - 10' x 17'

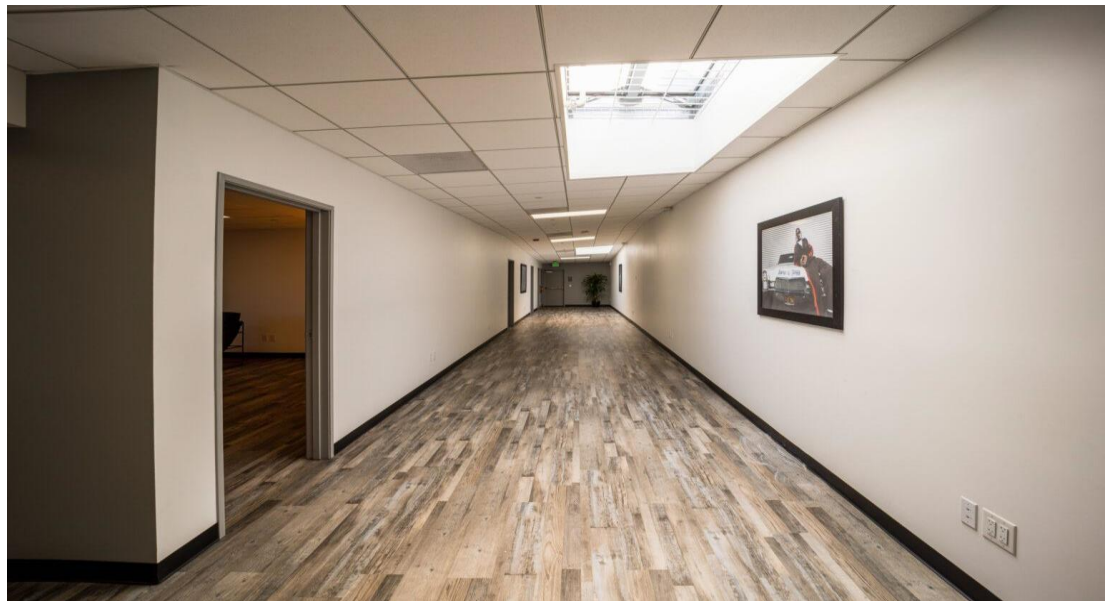
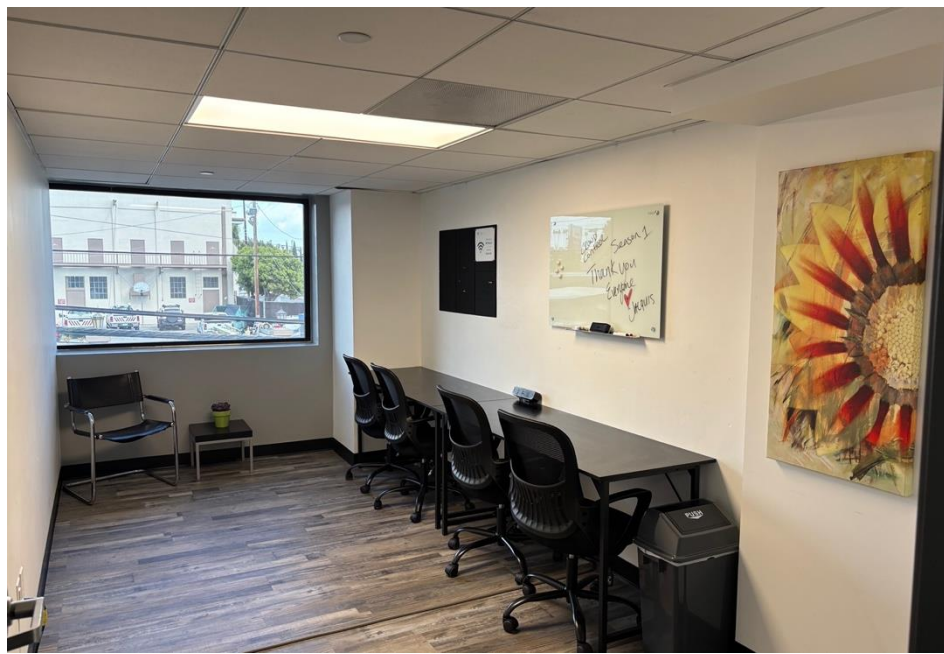


Stage 6, Details

20 On-site Parking Spaces
Private, gated lot Kitchenette
10'x 17' Load-in Door with Ramp

2) Hair /Makeup /Wardrobe
Green Room
(4) Productions Offices
Conference Room

Crew & Private Bathrooms
Private Shower
WiFi
Dumpster

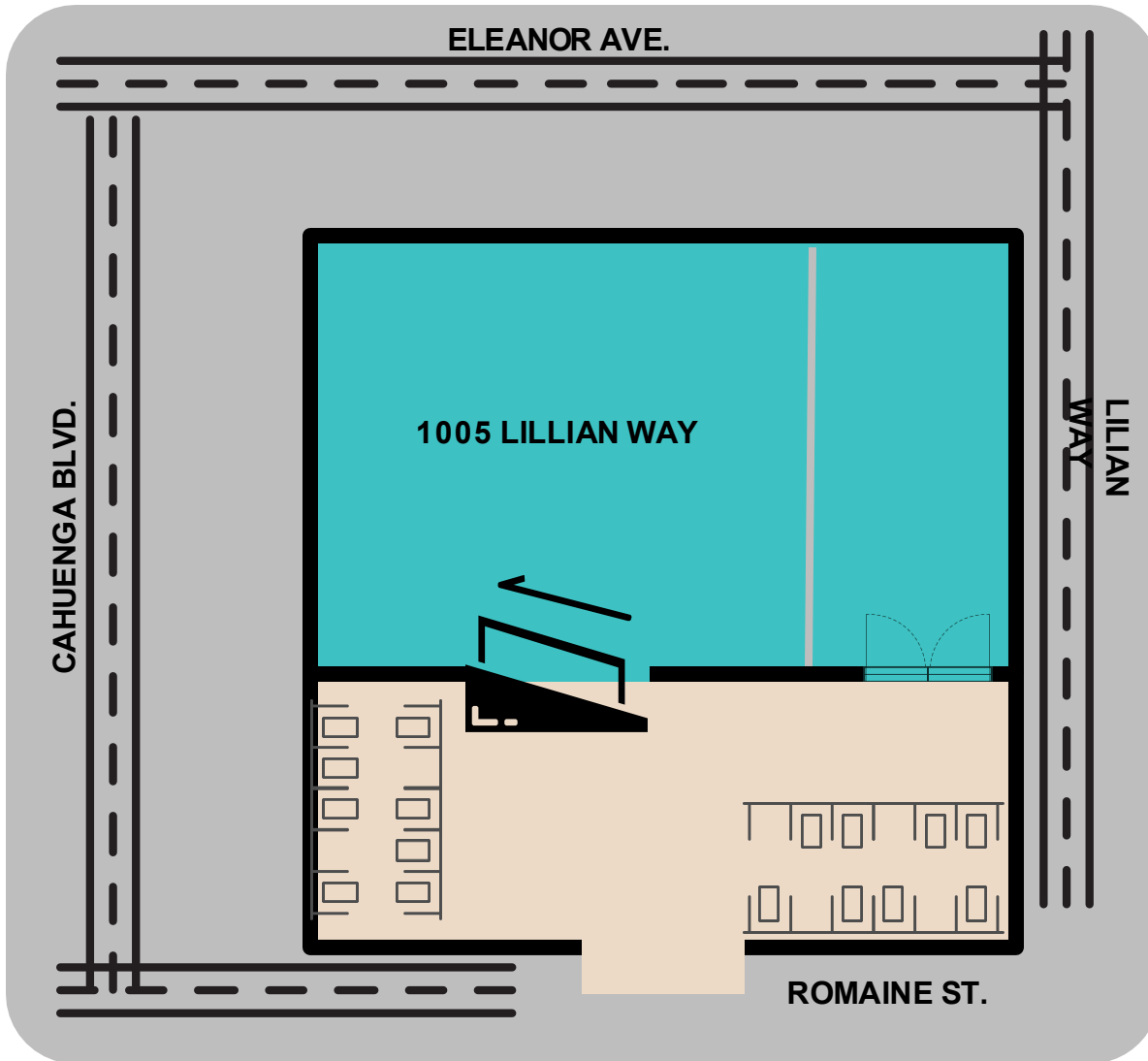


Stage 6, Details

20 On-site Parking Spaces
Private, gated lot Kitchenette
10' x 17' Load-in Door with Ramp

2) Hair /Makeup /Wardrobe
Green Room
(4) Productions Offices
Conference Room

Crew & Private Bathrooms
Private Shower
WiFi
Dumpster



STAGE 6

SOUND STAGE

9400 Square Feet

18' to Pipe Grid / PSF - 6

1200 Amps, 3 Phase Power

HVAC - 40 Tons of Silent Air

Up to 20 Parking Spaces On-Site

Dock High or Ramp Load-in

PRODUCTION SPACE

4900 Square Feet of Flexible Space

First Floor:

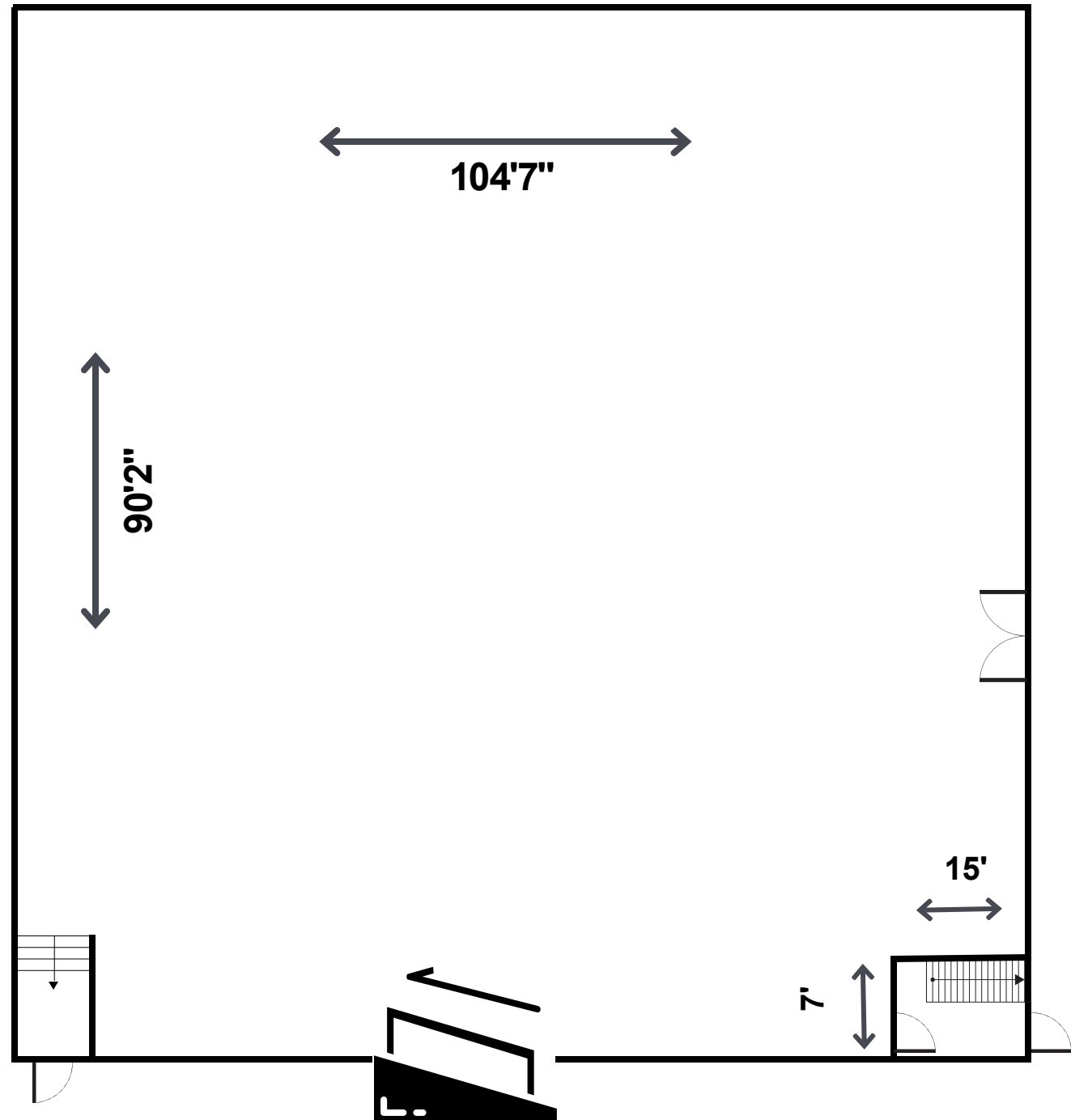
- Production Office
- 2 h/m/w Rooms
- Kitchenette
- Crew Bathrooms
- Private Bathroom w/Shower
- Flex Space for Lunch or Staff

Second Floor:

- 3 Production Offices
- Green Room
- Conference Room
- Crew Bathrooms
- Space for Bullpen

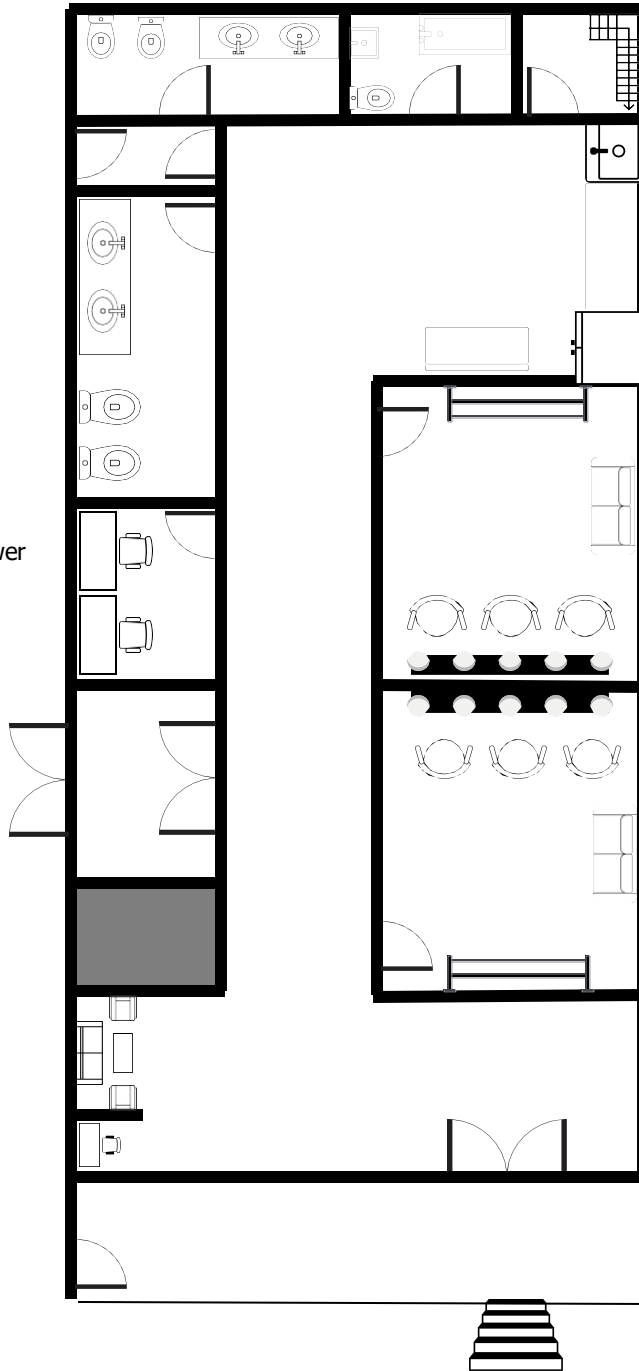
STAGE 6:

- > Width – 104' 7"
- > Length – 90' 2"
- > Grid – 18'
- > Fire Lane – 4'
- > Total Square Feet – 9,845
- > Usable Square Fee – 9,086
- > 40 Tons Silent A/C
- > Elephant Door – 10' x 17'
- > Dock High Load-in - Ramp
- > Occupancy Load – 250
- > Power – 1,200A / 120-208V
- > Disconnects – 1
- > Bell & Light System
- > Exhaust Fan



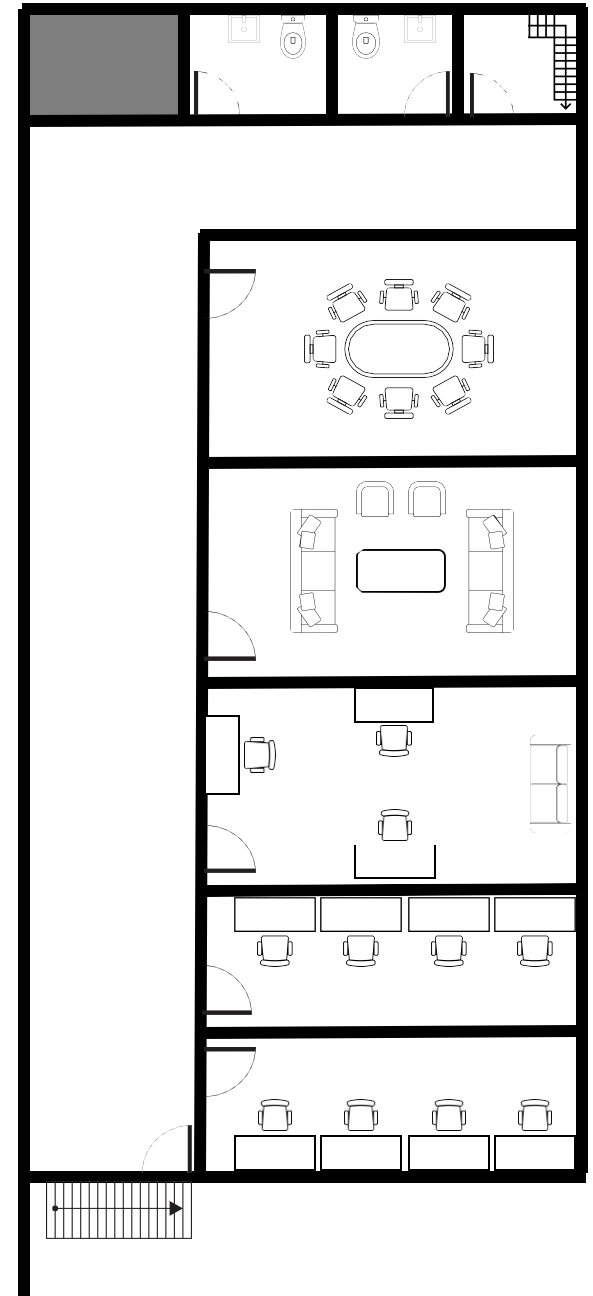
1ST FLOOR:

- > Lounge
- > Security Desk
- > Open Workspace
- > 2 Hair / MU / Wardrobe
- > 1 Production Office
- > Crew Bathrooms
- > 1 Private Bath/Shower
- > Kitchenette



2ND FLOOR:

- > Conference Room
- > Green Room
- > 3 Production Offices
- > 2 Private Baths
- > Open Workspace



Stage & Parking Info.

BLT Studios Office: (323) 391-1991

SOUND STAGES

STAGE 1: 6309 Eleanor Avenue
5500 SF / 20' grid / 1800 amp power

STAGE 2: 6309 Eleanor Avenue
4700 SF / 17' grid / 1200 amp power

STAGE 3: 6309 Eleanor Avenue
3750 SF / 17' grid / 1800 amp power

STAGE 4: 1015 N. Cahuenga Blvd
2800 SF / 20' grid / 1800 amp power

STAGE 6: 1005 Lillian Way
9400 SF / 18' grid / 1200 amp power

PARKING

CREW PARKING:

The entrance is located at approximately 935 N. Cahuenga Blvd.

STAGE 1:

Entrance at 6309 Eleanor Avenue

STAGE 3:

Three VIP spots located at 1060 Lillian Way

STAGE 6:

Entrance at 6250 Romaine Street

